



# Grades 9-11 Registration Information

Mrs. Frank, Mrs. Gloege & Mr. Ziemer

# Registration Materials - available online

Transcript (not available online)

Registration Information Sheet

Registration Guide

Credit Check Sheet (CTE & Traditional Pathways)

Cheat Sheet

Registration Book (via email)

# Current Graduation Requirements-



Must earn a minimum of 46 credits in grades 9-12

Must take 6 credits each semester/12 credits per year

Grade 10 - MCA Science & MCA Reading

Grade 11 - MCA Math

# English Requirements

English - 8 Credits

9th Grade - English 9A and 9B

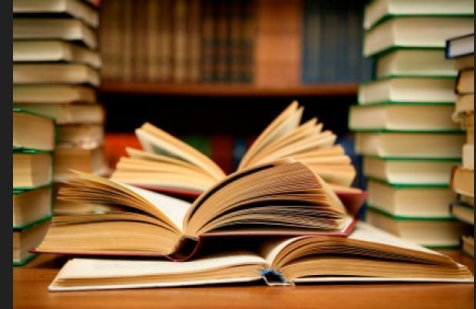
10th Grade - English 10A and 10B

11th & 12th Grade:

Required Courses: Pick one course from Writing I category & one course from World Lit category

Elective Courses: Select two courses from the following three categories: Writing II, Modern Literature, and Performance. To meet the requirement, courses cannot be from the same category.

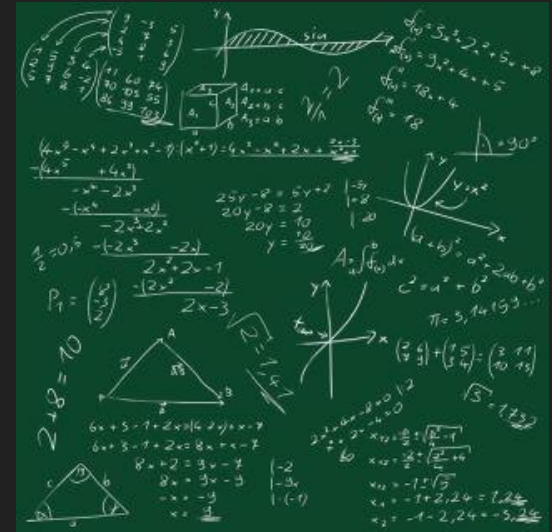
\*Please speak to your English teacher for additional clarification



# Math Requirements

Math - 6 credits

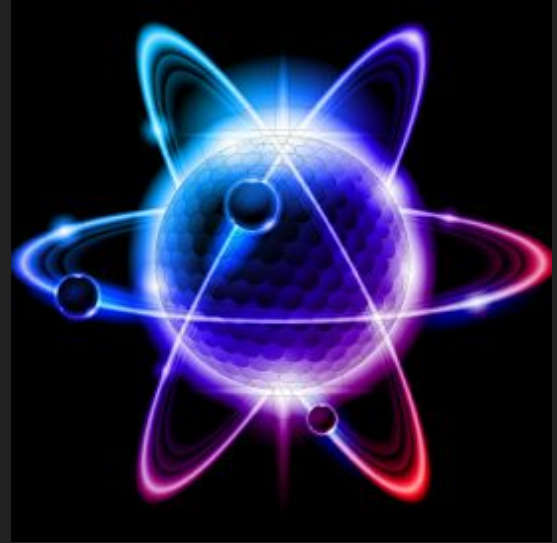
- ❖ Geometry A & B
- ❖ Algebra IIA & IIB
- ❖ Prob/Stats
- ❖ Math Elective; one of the following
  - Fundamentals of Algebra
  - Algebra III
  - College Algebra



# Science Requirements

## Science - 6 credits

- ❖ Science 9A & 9B
- ❖ Biology A & B
  - College Biology in 11th grade
- ❖ Chemistry/Physics (Pick 1)
  - Chemistry A & B
  - Investigating Chemistry A & B
  - Physics A & B
  - Investigating Physics A & B



# Social Studies Requirements

## Social Studies - 7 Credits

- ❖ American History A & B
- ❖ World History A & B
- ❖ Human Geography
- ❖ American Government
- ❖ Economics (Pick 1)
  - Economics
  - Business Economics
  - Ag Economics



# Physical Education/Health Requirements

Phy. Ed./Health - 3 credits  
(Traditional Pathway)

- ❖ Forever Fit
- ❖ Health

➤ Health/Lunch - A semester course taught over the lunch hour (25 minutes) for the entire school year instead of a Resource class, must be in top  $\frac{1}{3}$  of your class. Email your counselor if interested.

- ❖ Phy. Ed or Health or Medical Science Elective





# Fine Arts

## ❖ Fine Arts - 2 credits (Traditional Pathway)

❖ Visual Art

❖ Music

➤ Vocal

- Please speak with Mr. Olson to see which choir course you should be registering for.

➤ Instrumental



# CTE

- ❖ Career and Technical Education (CTE) - 2 credits  
(Traditional Pathway)
  - AG/IT
  - Business
  - Computer Science
  - FACS



# CTE Center: Classes Available to Both Pathways

## Introductory Level Courses

- Intro to Trades
- Intro to Mechanics
- Intro to Business
- Welding I
- Basic Woods
- Metals I
- Residential Maintenance

## Advanced Level Courses (CTE Center)

- Auto Mechanics
- Auto Body
- Small Engines/ATV Repair
- Advanced Welding
- Metals II (Metal Fabrication)
  - Mill Lathe
- Carpentry
- Advanced Woods/Cabinetetry
- Eagle Enterprise
- CAD

# CTE Pathway

- ❖ Required CTE Courses - 8 Credits
  - Intro to Trades
  - 1 Introductory level course
  - 4 CTE credits (any level)
  - Internship or Eagle Enterprise
- ❖ Additional Electives - 11 Credits
  - Can be taken from any department
- ❖ To graduate through the CTE pathway a student would be required to meet with a counselor to review the educational benefits/shortfalls of all pathways.
- ❖ The educational pathway will be annotated on the student transcript.

# Advanced Placement (AP) & Honors Courses

AP World History (10th grade)

Honors American History A & B

AP Human Geography (11th or 12th grade)

Honors Geometry A & B

Honors English 9A & 9B

Honors Algebra IIA & IIB

Honors Biology A & B

Honors Chemistry A & B

# Concurrent Enrollment

- College Courses offered at NUHS, taught by NUHS teachers
- Students must meet specific college requirements
  - Students earn both high school and college credit
  - This starts an official college transcript
- NUHS partners with the following colleges
  - Minnesota State University, Mankato
  - Southwest Minnesota State University
  - Bemidji State University

# Concurrent Enrollment Courses

## Concurrent Enrollment Courses Offered at NUHS

MSU



SMSU



BSU



Intro to Psychology - 4 credits

College Spanish - 4 credits

Calculus - 5 credits

Psych of Learning - 2 credits

Global Literature - 3 credits

College Algebra - 4 credits

Public Speaking - 3 credits

Academic Writing - 4 credits

Trigonometry - 3 credits

Our Natural World - 4 credits

American Gov't - 4 credits

General Biology - 4 credits

European History - 4 credits

# Concurrent Enrollment Requirements



MSU - Minnesota State University, Mankato

10th Grade - Have approval from University President AND score in the top 90th percentile on ACT or be in the top 10% of class. Preference given to Juniors and Seniors

11th Grade - must be in top 33% of class, or 3.3 GPA, or 24 Act with a 2.7 minimum GPA.

12th Grade - must be in top 50%, or 3.0 GPA, or 21 ACT with 2.7 minimum GPA.



# Concurrent Enrollment Requirements



SMSU - Southwest Minnesota State University, Marshall

10th grade - top 10% of graduating class **AND** score in 90th percentile on ACT

11th grade - 3.0 Cumulative GPA or higher, **AND** be in top 1/3 of graduating class or score at or above the 70th percentile on a nationally normed test.

12th grade - 3.0 cumulative GPA or higher, **AND** be in top 1/2 of graduating class or score at or above the 50th percentile on a nationally normed test.

# Concurrent Enrollment Requirements



BSU - Bemidji State University

11th grade - need to be in top 33% of class or score at or above 70th percentile on a nationally normed standardized test.

12th grade - need to be in top 50% of class or score at or above 50th percentile on a nationally normed standardized test.

# College Study Time

→ Study hour dedicated to supporting your collegiate level courses

→ For every 4 college credits you get 1 College Study Time

→ College Study Time is not required

→ If you are looking to register for concurrent courses, come grab a sheet up front

College Study Time Calculation Sheet			
College Credits	High School Credits	Study Time Periods	Concurrent Enrollment Courses and Credits
2	1	0	
3	1.5	0	<b>CE Courses offered through MSU, Mankato</b>
4	2	1	Introduction to Psychology: 4 college credits
5	2.5	1	Psychology of Learning: 2 college credits
6	3	1	Biology; General Biology: 4 college credits
7	3.5	1	Biology; General Biology: 4 college credits
8	4	2	Spanish III A/B: 4 college credits
9	4.5	2	Public Speaking: 3 college credits
10	5	2	European History to 1648: 4 college credits
11	5.5	2	
12	6	3	<b>CE Courses offered through SMSU, Marshall</b>
13	6.5	3	Academic Writing: 4 college credits
14	7	3	Global Perspective: 3 college credits
15	7.5	3	American National Government: 4 college credits
16	8	4	
17	8.5	4	<b>CE Courses offered through Bemidji State University</b>
18	9	4	College Algebra: 4 college credits
19	9.5	4	Special Functions & Trigonometry: 3 college credits
20	10	5	Calculus: 5 college credits
21	10.5	5	
22	11	5	
23	11.5	5	
24	12	6	

# PSEO - Post Secondary Enrollment Options

→ Taking college courses taught by a college professor (each college has their own specific requirements, but in general the following is true)

10th Grade - Score in the top 90th percentile on ACT AND be in the top 10% of class/preferential placement to Juniors and Seniors

11th Grade - be in top 1/3 of class, or 3.3 GPA, or 24 Act with a 2.7 minimum GPA.  
CANNOT be in bottom 1/4 of class

12th Grade - be in top 1/2 of class, or 3.0 GPA, or 21 ACT with 2.7 minimum GPA.  
CANNOT be in bottom 1/4 of class

PSEO is listed as **008** and **009** in the registration manual and online (register if you are interested and schedule meeting with your counselor)

# Courses requiring supplemental information

Additional information is due by the last day of Registration March 24, 2023

## Grades 10-12

Fine Arts Aide

PEOPEL Aide

## Grades 11-12

Eagle Enterprises

## Grades 12

Apprentice



## Online Courses - MDE Approved Online Provider

- ❑ Multistep Process
- ❑ Online Provider (school) must be MDE approved
- ❑ You are responsible for contacting the online provider and registering for your course
- ❑ Must meet NUHS timelines
- ❑ To register, select OLL Vendor

# Flexible Scheduling

Early Bird Classes - Marked as “E” after course number in book.

Night Classes - Marked as “N” after course number in book.

Year Long Classes - Marked as “Y” after course number in book.

# Registration Changes

Auto Mechanics & Auto Body are their own courses

Agronomy title change to Crops & Soils

**\*\*If a course does not show up in Infinite Campus, it is likely that the course is not offered in 2023-2024. Please double check with a counselor.**



## Course Selection - Rigor/Balance

- ❖ Know yourself - play to your strengths
- ❖ Find the RIGHT BALANCE for you
- ❖ Sometimes students add too much PRESSURE to themselves
- ❖ It's ok to not take any Honors/AP/PSEO/CE courses
- ❖ It's ok to only take 1 or 2 Honors/AP/PSEO/CE courses
- ❖ Consider a Guided Study (pass/fail) if you need time in the school day to complete homework and study

# Student Example - Register

- ❖ Log into Student Portal
- ❖ Click on “More” on the left hand side
- ❖ Click on Course Registration
- ❖ Click 23 - 24 School Year
- ❖ Click Add Course
- ❖ Course Search by Name or Number
  - Tip #1: If searching by course name only type in first 2 letters
  - Tip #2: Course numbers are easier to use than names
  - Tip #3: If you type in the number and no course appears, it most likely is not offered, but may be a mistake, let us know!